

I/N News ... especially for you!

Volume 9, Issue 4
Winter, 2009

Suzi Subeck, Editor
Stan Subeck, President
John Goldstein, Vice President
Denise Hoffman, Secretary
Jeff Miller, Treasurer

Bridge Terms for Beginners

Inside This Issue:

Terms for
Beginners 1

Ms. Information 7

Tournament
Schedules
Throughout

Finesses 8

Tournament
Results 10

Attitude signal As defender, play a high card to encourage and a low card to discourage

Auction The first stage of the game... the bidding. ... each player speaks in turn using the language of the bridge

Balanced hand No void or singleton, not more than one doubleton. 4-3-3-3; 4-4-3-2; 5-3-3-2 distribution ... and sometimes, 5-4-2-2

Bid A call made during the auction in a suit or in no trumps... could be a double or redouble or pass

Biddable suit A suit with four or more cards in it.

Bidding box A box from which each player extracts a bid and sets it on the table thus creating an auction.

Blackwood An artificial bid of 4NT asking partner how many aces he holds.

Board The container which holds a deal: four hands each consisting of 13 cards.. Boards come in numbered sets and show who is dealer and who is vulnerable.

Bonus Extra points for making a contract, like 50 for a part score.

Cash Out To take your winners.

Claim Showing your hand and stating a line of play or defense and explaining how many tricks you are taking.

Competitive bidding An auction in which both sides compete for the contract.

Contract The final bid in the auction which determines the denomination

All 299er event entries at the April Regional will be only \$7.00.

Don't miss this special opportunity to play for these reduced fees!

(Continued on page 2)

(continued from page 1)

(suit or no trumps) and the number of tricks to be won by declarer.

- Convention** An artificial bid with an agreed meaning, e.g. an opening 2♣= big hand.
- Count signal** Play by defender of a higher then lower ranking card to show an even number of cards, or low then high to show an odd number of cards.
- Covering honors** When an honor is led and the next player plays a higher honor, this is said to be ‘covering an honor with an honor’.
- Cross-ruff** Sequence of tricks in which a player and his partner score trumps separately by alternately ruffing side suits.
- Deal** Fifty-two cards distributed so each player has thirteen cards.
- Dealer** The player who makes the first call on a deal.
- Declarer** The player on the side winning the contract who first bid the suit or no trumps and who thus has the right to play both his hand and dummy.
- Defeat the contract** To win, in defense, enough tricks so that declarer fails to make the contract. The score is 50 points for each non-vulnerable undertrick and 100 if vulnerable.
- Defense** The line of play adopted by the defenders.
- Defenders** The two players in opposition to declarer. Often referred to as RHO (right-hand opponent) and LHO (left-hand opponent).
- Denomination** Clubs, diamonds, hearts, spades or no trump.
- Discarding** When unable to play a card in the suit lead, playing another suit (not trump)... Discards can reveal preferences to partner while asking for specific switches if partner gets the lead
- Double** Either a bid to extract a larger penalty or a bid to ask partner to bid a suit or do something intelligent.
- Double dummy** A play which could not be bettered even if declarer could see all four hands.
- Doubleton** A holding of two cards in a suit
- Ducking (hold-up)** Deliberately withholding a high card which could have won a trick.
- Dummy** Declarer’s partner whose hand is tabled after the opening lead.
- Duplicate bridge** Where the score is determined by comparison with other scores on the same deal.

(Continued on page 3)

(continued from page 2)

Entry	A card that enables access to a particular hand.
Establishing	Setting up a specific card or cards as winners by forcing out high cards.
Etiquette and Ethics	Good manners and good behavior at the bridge table
Finesse	Leading toward a tenace and playing small when your opponent plays small... e.g. leading from your hand toward an AQ in dummy, inserting the queen, hoping LHO has the king and the queen will hold the trick
Fit	Holding enough cards in partner's suit to raise.
Flat board	A hand where all tables involved score the same result
Following suit	Playing a card in the same suit.
Forcing bid	A bid which tells partner to bid again.
Forcing to game	or Game forcing, is demanding that the partnership does not stop short of game.
Fourth highest	Lead in a suit of the fourth card from the top, e.g. K J 9 6 4 lead the 6.
Free bid	Making a bid when no one has forced you to do so.
Game	Contract whose trick score is 100 points or more, e.g. 3NT, 4♥,4♠,5♣,5♦.
Get a count	Discover the distribution of the unseen hands
Give count	Make a distributional signal.
Go down	Take fewer tricks than you said you would.
Grand slam	A contract to make all thirteen tricks.
High card points	Values given to high cards to help decide what to bid (ace=4, king=3, queen=2, jack=1). There are 40 high card points (HCP) in the deck.
Honors	The five highest cards in a suit (ace, king, queen, jack, ten).
Intermediates	Middle-size cards like tens, nines and eights that might win tricks.
Invitational bid	Invites partner to game or slam

(Continued on page 4)

(Continued from page 3)

Jump bid	A bid at a higher level than required to name the denomination of the bid, usually signifying either a very strong hand or a weak hand with a long suit.
Jump overcall	A single jump bid made as an overcall.
Jump shift	A bid in a new suit higher than necessary to beat the previous bid.
Kibitzer	An onlooker at the card table
Laws	The Laws of Duplicate Bridge
Lead	The first card played to a trick.
Limit bid	A bid that limits the strength and distribution of the hand within precise bounds.
Long suit	A suit of four or more cards in the same hand.
Major suits	Spades and Hearts whose tricks score 30 points each.
Match-point scoring	The way the results are usually determined in a pairs competition.
Minor suits	Diamonds and Clubs whose tricks score 20 points each.
Non-forcing	A bid which does not require a response from partner.
No trumps	A contract played without trumps (the highest card in the suit led wins the trick).
Opening bid	The first call in the auction other than 'Pass'. Made by the 'Opener'.
Opening lead	The card led to the first trick before dummy is faced.
Overbid	A call for which the bidder has insufficient values.
Overcall	Bid made by the opponents after the bidding has been opened.
Overtrick	A trick made by declarer above the number required for the contract.
Pair	The partnership of two bridge players. (Partners sit either East/West or North/South)
Part score	A contract below the level of game, the trick value is less than 100.
Pass	Or 'No bid' indicates the caller has nothing worth saying at this stage. In the case of an opening pass, the player is indicating less than the required points to open the bidding... generally less than 13 points.

(Continued on page 5)

(Continued from page 4)

- Pass out** All four players pass without anybody bidding, or three passes after a bid.
- Passive lead** A lead which tries not to give away a trick to declarer but may also not be attacking for the defenders.
- Penalty** Points scored by defenders when declarer fails to make a contract.
- Play** After the bidding, when declarer tries to make the contract and defenders try to defeat it.
- Pre-emptive bid** Obstructive bid, made at a high level, usually a weak hand with a very long suit.
- Raise** Responding to partner's bid by raising his suit to a higher level.
- Rebid** The second or subsequent bid made by a player. To rebid a suit already bid, promises extra length, five or more cards.
- Redouble** An expression of confidence that a contract would make despite being doubled for penalties. Redouble increases the stakes. Sometimes used conventionally.
- Responder** The partner of the player who started the partnership's bidding.
- Reverse** A rebid in a new suit, after a one-level opening, higher than two of the first suit bid. Shows extra strength and distribution.

District 13 Spring Regional

April 19-25, 2010

Grand Geneva Resort and Spa, Lake Geneva, WI
on Route 50, 1/2 mile East of Route 12

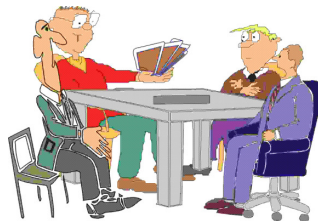
Room rate: \$107 single or double + \$12 resort fee.
Call 262-248-8811/800-558-3417 by April 1.

Tournament Chairman:
Marilynn Charlson, 262-646-2246
email: mcharlson@wi.rr.com

All 299er entries are only \$7.00!!!

Fresh Fruit
Fri/Sat Hospitality
Daily Bulletins

Students play for half price
with valid student ID card!



**Intermediate &
Newcomer Events**
0-299er Masterpoints

0-5 ACBL members play FREE all week

Monday: 7:30

Stratified 2 for 1

299er & 49er Pairs

Free entry for later in the week

Tuesday - Saturday

Single Session Games

at 9:30, 2:00, & 7:30

Stratified 299er & 49er Pairs

Sunday: 10:00 & 2:00

0-299er Swiss Teams:

300/200/100/50

2 separate sessions

Lynette Koskie, I/N Chairman
Llk220@aol.com

Madison Sectional

Fitchburg Community Center
5520 Lacy Rd
Fitchburg WI 53711
(608) 270-4285

Friday, December 4

9:00 A.M. 299er Pairs

1:30 P.M. 299er pairs Stratified by
director

Players with 0-5 pts. play free if member of
ACBL

Saturday, December 5

9:00 A.M. 299er pairs Stratified by
director

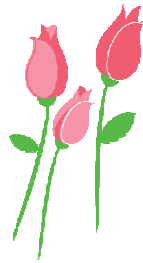
1:30 P.M. 299er pairs Stratified by
director

Chairman Diane Vaughan
(608) 238-0851
vaughandiane@hotmail.com

Partnerships Jim Mulbrandon
(608) 848-7949
cell 608-215-5768
Use cell only Dec 1-6
Mulb1108@yahoo.com



WUMBA Spring Sectional, March 19-21, 2010
Appleton, Wisconsin, The Wave Ballroom
2350 N. Casaloma Dr., Appleton, WI



Friday, March 19

1:30 p.m. Stratified 299er Pairs
7:00 p.m. Stratified 299er Pairs

Saturday, March 20

9:00 a.m. Stratified 299er Pairs
1:30 p.m. Stratified 299er Pairs
7:00 p.m. Stratified 299er Pairs

Chairperson Mary Jane Fero (920) 725-6454
maryjanefero@aol.com
Partnerships Audrey Hansman (920) 257-4260
ajhans@sbcglobal.net

La Crosse Sectional

City Brewery & Hospitality Center, 1111 3rd Street, La Crosse, WI

Friday, 11/13

1:30 pm
199er Pairs
7:00 pm
199er Pairs



Saturday, 11/14

9:00 am
199er IMP Pairs
1:30 pm
199er Pairs

Partnerships: Mary (MJ) Sartz (608) 788-5364
Chairperson: Dave Melin (608) 797-3587
mailto:melind0908@aol.com

ACBL members with 5 or fewer points play free!

WUMBA Winter Bridge Sectional, January 29-31, 2010

Royal Ridges, (920) 748-7095, 1 Westgate Drive, Ripon, WI
(Highway 23/West Fond du Lac Street)

Friday, 1:30 and & 7:00 299er pairs
Saturday, 9:00 and 1:30 299er pairs

Chairperson Lee Prellwitz (920) 748-2536 lprell@charter.net
Partnerships Rob Webster (920) 748-4114 riponpicknsave@charterinternet.com

Trophies for 299er Winners
0 — 5 Masterpoints (ACBL Members) Play for **FREE**



CHICAGO WINTERFEST SECTIONAL
January 29-31, 2010

Holiday Inn - Rolling Meadows Schaumburg
3405 Algonquin Road, Rolling Meadows

Events for Intermediate/Newcomers
(0-300 Masterpoints)

Stratification : 0-20/20-50/50-100, 100-200, 200-300

Friday, January 29
10:30 Stratified Pairs
3:30 Stratified Pairs
8:00 Stratified Pairs

Saturday, January 30
1:30 Stratified Pairs
8:00 Stratified Pairs

Sunday, January 31
11:00 Stratified Swiss Teams

(2 Sessions, more chances for Silver Points!)

Tournament Chairman, Jan Churchwell 847-714-1942
847-373-3569 cell jan8242@gmail.com

Partnerships, Carl Sharp 773-483-3734
IBSharp2@sbcglobal.net

For additional information
Chicago Contract Bridge Association
630-235-4718 or www.bridgeinchicago.com



Ms. Information ...

Dear Ms.,

At the recent Chicago Central States Regional, I went to a lecture by one of the “expert” speakers. It was really great. I was able to ask questions about a hand I held and the expert told me what I should have bid AND why!! Now I understand and I won’t go 800 again quite so easily.

Now I have another question and I’m coming to you. If I notice a score entered improperly on the sheet, how long do I have to get it corrected and who do I approach to do it?

We had a score entered wrong (might have been our fault with those new machines...) from the afternoon session. We went to dinner and got back just in time to play ... We didn’t notice the error until the end of the evening session when the sheets were posted on the wall.

We found a director the next morning and he said it was too late to do anything about it.

Is that fair?

Thanks for taking the time to help me. (I am in time for that, right??... Only kidding!)

Scoreless in Green Bay

Dear Scoreless,

This is an unfortunate situation for sure. The rules state that scoring errors may be addressed and corrected up to the start of the next session. Had you checked the scores when you returned from dinner, the directors would have fixed the error while you played the second session.

Finding the error after the completion of the event makes life very difficult because things like this must be checked with your opponents as well as with you. Once the event ends, if your opponents have left the playing area, it is impossible to speak to them. Hopefully these scoring accidents will be less frequent with the advent of the scoring machines... but we’re all human so the best way to avoid these problems is to return early after a session and check the scores yourself to be sure.

Ms.

Wisconsin Holiday Sectional

December 26-29

Best Western

Milwaukee Airport Hotel

5105 S. Howell

Milwaukee

Saturday

December 26

9:30 am

299er Stratified Pairs

2:00 pm

299er Stratified Pairs

Monday

December 28

9:30 am

299er Stratified Pairs

2:00 pm

299er Stratified Pairs

Tuesday

December 29

2:30 pm

Stratified 299er

Swiss Teams

Co Chairmen:

Yvette Neary

414-526-9035 (cell)

yneary@firstweber.com

Nancy Wilkinson

414-906-1471 (home)

Flamingo-nw@hotmail.com

Partnerships:

Kathy Lucas

414-354-2135 (home)

jkluucas@ameritech.net



Finesses aka Playing Small Towards Big from 5th Chair

The three fundamentals of play are:

- a) Play Small Towards Big
- b) Attack Your Length
- c) Keep Winners, Toss Losers

While the latter is good advice at dating as well as bridge, it is that first fundamental which is most frequently violated by novices. In fact, failure to play small towards big will account for almost half the errors that a new player will make!

Most of us have heard the admonition to play "2nd hand low" and "third hand high". Let us look at the prototypical first trick. The opening leader shoots out the H-2. Dummy contributes the H-3; "2nd hand low". The next defender interjects the H-King--third hand high--to force out Declarer's Ace. Notice that both pairs have played a small card (H-2 to H-King, H-3 to H-A) towards a big one! In this way, the maxims about playing "2nd hand low" and "3rd hand high" are merely applications of our fundamental "play small toward big rule".

Take this common situation:

Dummy
C-K4

Declarer (you)
C-32

If a Club is played from Dummy we will never take a trick. The defense will simply stomp on the C-King whenever it is played to them. But, if Declarer comes to his hand and plays small towards Dummy's big card (i.e. the C-King here) we will score a trick whenever the C-Ace is in the West hand. Now let's revise this hand slightly.

Dummy
C-AQ

Declarer (you)
C-32

Here we will take one trick with the Club Ace but might get a second trick if we come to our hand and lead a Club towards Dummy, inserting the C-Queen (if and only if West has the C-King, a 50% chance). We have, in effect, increased our chances of taking two Club tricks from almost 0% to 50%! This simple plan is called a "finesse" but, like "2nd hand low" and "3rd hand high", is nothing more than another application of our simple "play small towards big" rule.

This same plan pops up again when we have a holding such as:

Dummy
C-AQ10

Declarer (you)
C-32

One Club trick is all we get if we play from Dummy. But if we lead towards our big Clubs in

(Continued on page 9)

(Continued from page 8)

dummy and insert the C-10 (on the first round) and then again towards the C-Queen we might win three tricks in the suit if West (LHO) has the C-King and the C-Jack (a 25% chance)! Because we are hoping West has two cards (i.e. C-King and C-Jack here) this is called a "double finesse". We occasionally have to lose a trick in a suit in order to finesse later.

Dummy
C-AJ10

Declarer (you)
C-32

Once more, playing the C-Ace from Dummy will win us only one trick. But if we lead towards the C-10 and, when that loses to the C-King or C-Queen, repeat this finesse we can make two Club tricks whenever West has the C-King and/or the C-Queen (a 75% chance). Note that we can only make these two tricks if we lead towards our big cards (i.e. Dummy's C-AJ10) twice here, finessing each time. Inserting the C-10 on the first round here is called a "deep finesse". There are two corollaries to this basic "play small towards big" tenet:

a) Long Towards Short

When we have big cards in both hands we want to play towards the shorter length first. This helps unblock the suit so that we can run it later. It also helps us finesse in the suit later if an opponent shows out.

Dummy
S-Q4

Declarer (you)
S-AK1032

If we play the S-Ace or S-King on the first round we will block the suit. If we play the S-Queen first we can run the suit whenever the S-Jack falls doubleton or tripleton. If West shows out on the first round we can even finesse for the S-Jack on the second round.

Dummy
D-Q4

West East
D- KJ8 D-976

Declarer
D-A10532

Again, we start with a Diamond towards our D-Q4 first. If West rises with the D-King our troubles are over when the suit breaks 3-3. If West ducks the Diamond, though, we will win the Queen. When the suit breaks 3-3 we will take four Diamond tricks.

b) Open Towards Hidden

Dummy
H-K10432

West East
H- J98 H-A765

Declarer
H-Q

If Declarer were to lead the H-Queen here East would likely take it with the H-Ace. But if we play from the "open" (i.e. visible) hand, Dummy, East might duck and allow our H-Queen to win this trick.

Practicing and mastering this rudimentary technique will take us a long way towards becoming an expert.

Tournament Results:

Central States Regional, October, 2009

Tues AFT 299ers - 6.0 Tables

MPs	A	B	C	Names
2.26	1			Amelia Butzen, Fond Du Lac WI; Stephen Blitz, Fitchburg WI
1.70	2	1	1	Richard Riesen - Liz Riesen, Madison WI
1.27	3	2	2	Edward Gordon - Shirley Mitchem, Fox Lake IL
0.95	4			Timothy Kleimeyer, Sleepy Hollow IL; Robert Judd, Algonquin IL
0.94		3		Sue Lies, Wilmette IL; Virginia Enman, Glenview IL

Thursday Aft I/N Pairs - 8.0 Tables

MPs	A	B	C	Names
2.54	1	1	1	Nancy Bruick - John Bruick, Mundelein IL
1.91	2	2		Beth Binder - Joy Grossmann, Highland Park IL
1.43	3	3	2	Judith Auer, Dublin OH; Cindy Henderson, Northfield IL
1.07	4	4		Cynthia Bixel - Sandra Petrille, Naperville IL
0.80	5	5		Virginia Dimond - J Michael Dimond, Elmhurst IL

Wednesday Aft I/N Pairs - 7.0 Tables

MPs	A	B	C	Names
2.40	1	1	1	Eugene Trieglaff, Wild Rose WI; Barton Blum, Waupaca WI
1.80	2	2	2	Jake Brace, Winnetka IL; Ruth Kuncel, Elmhurst IL
1.35	3	3	3	Richard Riesen - Liz Riesen, Madison WI
0.90	4/5	4		Tom Prucher, St Charles IL; Tom Dearing, Geneva IL
0.89	4/5			Thomas McDonald - Karen Anderson, Batavia IL

299er - 8.5 Tables

MPs	A	B	C	Names
2.68	1	1		Keith Anderson - Mary Anderson, Rochester MN
2.01	2	2	1	Cynthia Marshall - John Marshall, Greendale WI
1.51	3	3		Mary Pokonosky, Excelsior MN; Joan Shapiro, Mendota Hgts MN
1.16	4	4	2	JoAnn Schroeder - Ann Schimelpfenig, Bloomington IL
0.85	5	5		Michael Kramer - Vicki Kramer, Addison IL

Sat Aft 299er - 4.0 Tables

MPs	A	B	C	Names
1.74	1/2	1/2		Cyann Martin, Neenah WI; Mary Ann Romberg, New London WI
1.74	1/2	1/2	1	Jeff Moe - Linda Moe, Woodridge IL
1.16	3	3	2	Jake Brace, Winnetka IL; Boris Sheyman, Buffalo Grove IL

Milwaukee FallFest Sectional, October, 2009

Friday Morning 299ers - 7.5 Tables

MPs	A	B	C	Names
1.82	1			Elaine Friedman, Milwaukee WI; Fred Arbanella, Muskego WI
1.52	2	1	1	Amelia Butzen, Fond Du Lac WI; Stephen Blitz, Fitchburg WI
1.14	3	2	2	Jack Shlimovitz - Steve Sapiro, Mequon WI
0.86	4	3	3	Maila Kuhn - Kenneth Kuhn, Tomah WI
0.64	5	4		Jeri Nelson, Neenah WI; Mary Ann Romberg, New London WI

Friday Aft 299er Pairs - 7.0 Tables

MPs	A	B	C	Names
1.72	1	1	1	Barbara Swansby, Pewaukee WI; Patricia Peck, Hartland WI
1.29	2	2		Monica Ansay, Oconomowoc WI; Suzanne Haidinger, Wales WI
0.97	3	3		Anna Biederwolf - Patricia Shea, Racine WI
0.73	4	4		Shirley Adams, Appleton WI; Cyann Martin, Neenah WI
0.89	5	5	2	Stephen Blitz, Fitchburg WI; Amelia Butzen, Fond Du Lac WI
0.67			3	Carol Cobus, Brookfield WI; Bea Husting, Waukesha WI

Sat Aft 299er Pairs - 8.0 Tables

MPs	A	B	C	Names
1.60	1/2	1/2	1/2	Mary Fischer - Louis Fischer, Fond Du Lac WI
1.60	1/2	1/2	1/2	Aaron Feldman, Milwaukee WI; Stan Lieberman, Mequon WI
1.02	3	3	3	Boris Sheyman, Buffalo Grove IL; Jake Brace, Winnetka IL
0.68	4/5			Wes Burzynski - Judy Burzynski, Waukesha WI
0.68	4/5	4	4	Barbara Blackburn - Adrian Richfield, Waukesha WI
0.53		5/6		Patricia Peck, Hartland WI; Barbara Swansby, Pewaukee WI
0.45		5/6		Jeri Nelson, Neenah WI; Mary Ann Romberg, New London WI

(Continued on page 11)

(Continued from page 10)

Sat Morn 299er Pairs - 6.0 Tables

MPs	A	B	C	Names
1.61	1	1	1	Mary Fischer - Louis Fischer, Fond Du Lac WI
1.21	2	2	2	Barbara Swansby, Pewaukee WI; Patricia Peck, Hartland WI
0.91	3			Robert Rice - Dianne Rice, Racine WI
0.86	4	3		Jeri Nelson, Neenah WI; Mary Ann Romberg, New London WI
0.67	4		3	Stephen Blitz, Fitchburg WI; Amelia Butzen, Fond Du Lac WI

Labor Day Sectional, September, 2009

Friday Speedball 299ers - 12.0 Tables

MPs	A	B	C	Names
2.22	1	1		Sandy Harlow - Marilyn Harlow, Lake Forest IL
1.67	2	2		Robert Quintin, Saint Charles IL; Chander Aiyar, Huntley IL
1.25	3	3		Ellen Rubert, Evanston IL; Janice Eager, Chicago IL
0.94	4	4		Kent Vlautin, Chicago IL; Loretta Wexler, Skokie IL
0.78	5	5		Joan Piolet, Boca Raton FL; Relli Miller, Lincolnwood IL
0.47	6/7	6/7		Richard Shuma - Nancy Shuma, Glenview IL
1.19	6/7	6/7	1	Sandra Herman, Chicago IL; Frieda Brown, Glenview IL
0.89			2	John Steffan - Marilyn Steffan, Wilmette IL
0.67			3	June Howard, Noryhbrook IL; Nancy Liebschutz, Northbrook IL

Friday Morn 299er - 13.0 Tables

MPs	A	B	C	Names
2.03	1/2	1/2	1	Nancy Kotler - Eleanor Tolson, Glencoe IL
2.03	1/2	1/2		Frances Leavitt, Lincolnwood IL; Mary Cieslik, Park Ridge IL
1.31	3	3		Kent Vlautin, Chicago IL; Loretta Wexler, Skokie IL
1.02	4	4	2	Sue Lies, Wilmette IL; Virginia Enman, Glenview IL
0.64	5/6			Karen Sarsfield - Elaine Vandenburg, Hinsdale IL
0.64	5/6			Jean Stonier - Mary McMahon, Winnetka IL
0.77		5	3	Kimi Fresco, Riverside IL; Rolland Wakeman, Bellwood IL
0.57		6	4	Richard Lewis, Highland Park IL; Arnold Landsman, Northbrook IL

Saturday Afternoon 299'er - 17.5 Tables

MPs	A	B	C	Names
2.83	1			Sheila Pickard - Gayle Oleff, Highland Park IL
2.12	2			David Nash, Lake Bluff IL; S Richard Dembinsky, Wadsworth IL
2.47	3	1		Moreen Alexander, Wilmette IL; Georgia Janewicz, Morton Grove IL
1.85	4	2	1	Layton Kinney, Chicago IL; Robert Zboralski, Evanston IL
1.39	5	3	2	John Gardner - Carolyn Gardner, Arlington Hts IL
1.04	6	4	3	Audrey Rubinstein - Ronna Warshauer, Highland Park IL
0.78		5		James Degerstrom - Ann Degerstrom, Oak Brook IL
0.83		6	4	James Jacklin, Lagrange Park IL; Don Cohen, Oak Park IL
0.60			5	Jane Austermler, Barrington IL; Janis Morrisroe, Palatine IL
0.42			6	Barbara Mulvanny, Evanston IL; Richard Stern, Chicago IL

Saturday Evening 299er's - 8.5 Tables

MPs	A	B	C	Names
1.92	1			Karen Sarsfield - Elaine Vandenburg, Hinsdale IL
1.62	2	1	1	Janice Harris, Palatine IL; Joseph Connelly, Mundelein IL
1.22	3	2	2	Michael Cochran - Don Cohen, Oak Park IL
0.91	4	3	3	David Goldberg - Ellen Saks Goldberg, Winnetka IL
0.68	5	4		Barbara Ehrmann, Buffalo Grove IL; Iliana Rozemberg, Northbrook IL
0.51		5		Charlotte Katz, Wilmette IL; Patricia Latkin, Chicago IL

Sunday Aft 299ers Pairs - 10.5 Tables

MPs	A	B	C	Names
2.12	1	1	1	Diane Shachter - Howard Shachter, Deerfield IL
1.59	2	2		Judy Anderson - Bunny Hultman, Chicago IL
1.19	3	3	2	Layton Kinney, Chicago IL; Robert Zboralski, Evanston IL
0.89	4	4		Kent Vlautin, Chicago IL; Loretta Wexler, Skokie IL
0.67		5		Karen Sarsfield - Elaine Vandenburg, Hinsdale IL
0.57		6	5	Joan Piolet, Boca Raton FL; Relli Miller, Lincolnwood IL
0.67			3	Ellen Kuperman - Irv Kuperman, Highland Park IL

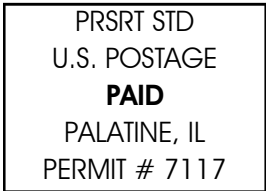
Monday Swiss 299er 1st - 5 Tables

MPs	A	B	Names
1.32	1/2	1/2	Marshall Hirshman - Marlene Hirshman, Riverwoods IL; Neal Spero - Gloria Spero, Highland Park IL
1.32	1/2	1/2	John Flershem - Robert McDonnell, Palos Heights IL; Ronald Zachary, Burr Ridge IL; Peggy Beyer, Hinsdale IL

(Continued on page 12)

The District 13 I/N Newsletter, Winter, 2009

Suzi Subeck, Editor
Email: stansubeck@prodigy.net
106 Penn Court, Glenview, IL 60026
Voice: 847-509-0311; Fax: 312-220-9114



Upcoming Tournaments

- LaCrosse Sectional, 11/13-15, LaCrosse, WI
- Madison Sectional, 12/4-6, Fitchburg, WI
- Wisconsin Holiday Sectional, 12/26-29, Milwaukee, WI
- WUMBA Winter Sectional, 1/29-31, Ripon, WI
- Chicago WinterFest Sectional, 1/29-31, Rolling Meadows, IL
- Wisconsin Holiday Sectional, 12/26-29, Milwaukee, WI
- WUMBA Spring Sectional, 3/19-21, Appleton, WI
- District 13 Spring Regional, 4/19-25, Lake Geneva, WI

(Continued from page 11)

Monday Swiss 299er 2nd - 3 Tables

MPs	Rank	Names
1.31	1	Robert Young - Shiaomay Young, Northfield IL; Nick Panos, Chicago IL; Iliana Rozemberg, Northbrook IL

Three Lakes Sectional, September, 2009

Fri Eve 299er Pairs - 3.0 Tables

MPs	A	B	Names
1.24	1	1	Mary Fischer - Louis Fischer, Fond Du Lac WI
0.73	2/4	2/3	Amelia Butzen, Fond Du Lac WI; Mary Freier, Marquette MI
0.73	2/4	2/3	Joan Kucharski - Kathy Riopel, Rhinelander WI
0.72	2/4		Ed Stoever, Rhinelander WI; Gordon Karpinske, Fitchburg WI

Sat Aft 299er Pairs - 6.0 Tables

MPs	A	B	C	Names
1.61	1	1	1	Jerry Walker - Mary Jo Walker, Daufuskie Is SC
1.21	2			Carol Schultz - Kenneth Schultz, Iron Mountain MI
0.96	3	2		Janet Welk - June Goltz, Green Bay WI
0.60	4/5			Jeri Sebo - Georgia Carr, La Crosse WI
0.76	4/5	3	2	Mary Fischer - Louis Fischer, Fond Du Lac WI
0.54		4		Nyla Jean Schroeder - Mickey Barricklow, Eagle River WI

Sat Eve 299er Pairs - 3.0 Tables

MPs	A	B	Names
1.31	1		Mary Freier, Marquette MI; Amelia Butzen, Fond Du Lac WI
0.98	2		Judyann Terrault, Powers MI; Julie Garrard, Escanaba MI

This is the on-line only edition of the **I/N News... especially for you!**

Each year, three issues of this publication are sent to you through the U.S. mail and one is posted online.

We hope you enjoy receiving it and we hope you find it useful toward improving your game.

Remember: the more you play, the more you learn and the better you get. Don't miss the District 13 Regional in Lake Geneva in April... free lectures and more ... more in the 2010 Winter issue of the **I/N News!**

See you in 2010!!