

I/N News ... especially for you!

Volume 10, Issue 1
Spring, 2010

Suzi Subeck, Editor
Stan Subeck, President
John Goldstein, Vice President
Denise Hoffman, Secretary
Jeff Miller, Treasurer

Take Out Doubles by Jim O'Neil

Inside This Issue:

Take Out Doubles 1

The takeout double is perhaps the most widely used – and misused – convention in contract bridge.

What are the requirements for a takeout double?

In general, to make a takeout double of an opening bid of one of a suit, the doubler should have at least an opening hand with good support for the unbid suits. Without good support for one or more of the unbid suits, the doubler should have a little extra high-card strength. With no support for an unbid suit, the doubler must have a very good hand indeed.

Consider a hand such as: ♠ – AJ65 ♥ – 7 ♦ – K743 ♣ – KQ52

A 600 Year Old Story 6

After an opening bid of 1♥ by RHO, this is an ideal hand for a takeout double. Whichever suit partner responds, this hand will provide a very good dummy – good 4-card support, with 13 high-card points and a singleton.

Ms. Information 7

Should RHO open 1♠, however, this hand does not qualify for a takeout double. Partner will most likely respond in hearts, and we have no safe recourse. Partner, with very few points, is obliged to bid something – his most likely response is 2♥. And now we have no good rebid. We could guess to bid 3 of a minor, hoping to find partner with support, but that would involve a guess at the 3-level. Trying to play 2NT opposite a partner who is nearly broke will usually prove hopeless.

IMPs v. Matchpoints 8

Before making any bid, especially a take-out double, consider partner's likely response. If you will have no good rebid, consider another action.

Lessons from Marty Bergen 10

The doubler promises partner not only a certain amount of high card strength, but a certain amount of safety – either support for whatever suit his partner responds, or a very good hand with a good suit of his own.

With ideal shape – 4 or more cards in every unbid suit, a double can be made with as few as about 11 high-card points. As the distribution gets less ideal, greater high-card strength is needed.

A reasonable rule of thumb:

For each unbid major suit with only 3 cards – add 2 points to our minimum requirement.

For each unbid minor suit with only 3 cards – add 1 point to our minimum requirement.

For each card more than 1 in opener's suit – add 1 point to our minimum requirement.

All 299er event entries at the April Regional will be only \$7.00.

Don't miss this special opportunity to play for these reduced fees!

(Continued on page 2)

(continued from page 1)

For example:

To double an opening bid of **1♥** by RHO:

With 4-1-4-4 distribution, a minimum of 11 hcp is necessary.

With 4-1-3-5 distribution, a minimum of 12 hcp (11+1) is necessary.

With 4-2-3-4 distribution, a minimum of 13 hcp (11+1+1) is necessary.

With 3-2-4-4 distribution, a minimum of 14 hcp (11+2+1) is necessary.

With 4-3-3-3 distribution, a minimum of 15 hcp (11+2+1+1) is necessary.

With fewer than three cards in an unbid suit, doubler should have a very powerful hand – a hand that was too strong for an simple overcall or a **1NT** overcall.

Responding to a Takeout Double: A takeout double is just that – doubler wants partner to “take it out”, that is, to bid something. It is important for the responder not to underestimate the value of his hand. Remember, the doubler is aware that responder could have nothing. Even with zero points, responder must bid. With a reasonable hand, then, responder must show his values.

If partner doubles an opening bid of **1♥**, we cannot bid **1♠** on all of these hands:

♠–J765 ♥–652 ♦–T63 ♣–942

♠–K765 ♥–52 ♦–AT6 ♣–Q942

♠–AQ75 ♥–52 ♦–KT6 ♣–AJ42

If partner doubles 1 of a suit and LHO passes:

A non-jump bid in a new suit shows a weak hand – about 0-8 pts. (Distributional values should be included.)

A jump bid in a new suit shows good values – at least 9 pts, but is not forcing.

A NT bid shows values and stoppers in opener’s suit.

A cue-bid (a bid of the opener’s suit) is the only forcing bid. It promises the values for game unless doubler and responder are both minimum and there is no major suit fit.

With fewer than 5 points, responder makes a non-jump bid in a new suit. Responder should generally bid his longest suit, but should prefer a 4-card major to a 4- or 5-card minor, especially if the major can be bid at the 1-level. Responder should usually not compete further unless doubler shows an extremely powerful hand. If RHO bids immediately over the double, responder should pass. With 5-7 points, responder still makes a non-jump bid in a new suit. Responder should usually bid his longest suit first; but with two suits, responder should try to bid them both. Responder is strong enough to compete further; and if RHO bids immediately over the double, Responder should bid. With 8-11 points, game is possible if partner has more than a minimum double. It is important for responder to show his values. Responder should jump in a new suit, or bid **1NT** with opener’s suit stopped. (If RHO bids a new suit over partner’s double, responder does not need stoppers – partner’s double implies something in that suit.) Responder should prefer a jump in a major to a **1NT** bid, but should prefer a **1NT** bid to a jump in a minor. With 12-13 points, game is probable. Responder can bid **2NT** with the opener’s suit stopped. Otherwise, responder should cuebid and then invite game. With 14 or more, game must be reached – responder should bid **3NT** with good stoppers in opener’s suit, or can jump to game in a suit with a very good suit. Otherwise responder should cuebid and push to game. There is only one situation in which responder is allowed to pass – when responder has an extremely good holding in opener’s suit (something like KQT965 or better), he can “convert” the takeout double to a penalty double.

Rebids by the Doubler - Just as responder should not underestimate his hand, it is important for the doubler not to overestimate the value of his hand. With a normal minimum takeout double, the doubler should usually pass at subsequent turns unless forced by partner. Any other bid promises more than a minimum.

After a non-jump suit response to a takeout double: With 16 or fewer points, doubler should pass. There is not enough for game. Responder has fewer than 8 points and could well have zero. With 17 or more points and 4 or more cards in

(Continued on page 3)

(continued from page 2)

responder's suit, doubler should raise. Doubler must remember that responder might be completely broke. After a 1-level response, doubler should raise to 2 with 17-19, raise to 3 with 20-22, and raise to 4 with 23 or more. After a 2-level response, doubler should raise to 3 with about 17-21, and raise to 4 with 22 or more. With a good hand and a good suit, doubler can bid his own suit. This shows a hand that was too good to simply overcall. To double and then bid a suit that could have been overcalled at the 1-level promises about 17-20 points. With an even stronger hand and a good suit, doubler can jump in his suit to the appropriate level – he should bid what he can make in his own hand. With a strong balanced hand, doubler can bid Notrump. This shows a hand too strong for a direct 1NT overcall. After a 1-level response, a bid of 1NT shows about 19-21, a jump to 2NT shows 22-24, and a jump to 3NT shows 25+. After a 2-level response, a bid of 2NT shows about 19-22, and a jump to 3NT shows 23 or more. Finally, with a good hand and no other clear-cut action, doubler can cue-bid – that is, bid opener's suit. This promises about 19 or more points; responder and doubler can bid naturally until the best contract is reached.

If responder makes a non-jump suit response after an intervening bid, he is promising some values – about 5-7. Doubler need not fear that partner is totally broke, but must remember that partner has denied 8 points. Doubler can raise a 1-level response to 2 with 17-18, to 3 with 19-20, or to 4 with 21+; doubler can raise a 2-level response to 3 with 17-19, or to 4 with 20+. A non-jump NT bid should show about 19-20, while a jump in NT should show 21+.

When responder makes a value-showing bid of 1NT or a jump in a suit, doubler should pass with a minimum (about 11-13 points). With 14-15 points, doubler should invite game. With 16 or more, doubler should insist on game.

When responder bids 2NT, doubler should go on to game unless he has an absolute minimum.

When responder begins with a cuebid, doubler must bid. Doubler and responder should start by bidding their best suits. Game will be reached unless both doubler and responder are minimum and there is no major suit fit.

LHO opens 1♦, Partner doubles, and RHO passes. What do you bid with:

- 1) ♠ – 8752 ♥ – K652 ♦ – T63 ♣ – 92
- 2) ♠ – K752 ♥ – A652 ♦ – T63 ♣ – 92
- 3) ♠ – 752 ♥ – 652 ♦ – T632 ♣ – 942
- 4) ♠ – 75 ♥ – K532 ♦ – T6 ♣ – T7642
- 5) ♠ – K752 ♥ – 762 ♦ – A6 ♣ – Q762
- 6) ♠ – AQ7653 ♥ – K75 ♦ – 732 ♣ – 4
- 7) ♠ – K75 ♥ – Q72 ♦ – KJ42 ♣ – T52
- 8) ♠ – AQ3 ♥ – K742 ♦ – J432 ♣ – A5
- 9) ♠ – A6 ♥ – 72 ♦ – KJT974 ♣ – 632

Again, LHO opens 1♦ and partner doubles. This time RHO bids 1♠. What do you bid with:

- 10) ♠ – 65 ♥ – Q654 ♦ – 863 ♣ – J872
- 11) ♠ – 65 ♥ – AQ64 ♦ – 863 ♣ – J872
- 12) ♠ – 65 ♥ – Q64 ♦ – KJ86 ♣ – A872

The auction proceeds as follows:

<u>RHO</u>	<u>You</u>	<u>LHO</u>	<u>Partner</u>
1♥	double	pass	1♠
Pass	?		

What do you bid with the following hands?

- 13) ♠ – A764 ♥ – 63 ♦ – KQ74 ♣ – A73

(Continued on page 4)

(Continued from page 3)

14) ♠ – AK64 ♥ – 63 ♦ – KQ74 ♣ – AJ3

15) ♠ – A6 ♥ – KJ74 ♦ – KQ74 ♣ – AQ3

16) ♠ – A6 ♥ – 64 ♦ – AKJ765 ♣ – AK3

17) ♠ – A64 ♥ – Q3 ♦ – AQ32 ♣ – AK75

Answers to Takeout Doubles, hands 1-17:

This hand is worth one bid. Bid 1♥.

With 7 points, try to bid twice. Bid 1♠, intending to bid Hearts next.

You cannot pass. Bid 1♥ .

Prefer a major to a minor. Bid 1♥ .

This hand is too good for a simple 1♠ response. A jump to 2♠ is better than 1NT.

You know where this hand belongs. Bid 4♠.

With 9 points, no major and good stoppers in the opponent's suit, bid 1NT.

You have enough to insist on game, but which game. 4♥ is probable, but 3NT and even 4♠ cannot yet be ruled out. Start with a cue-bid of 2♦.

This is the one situation where you are allowed to pass.

With 4 trump tricks and an Ace, can probably set 1♦ more than the value of whatever contract you can make.

RHO's bid has taken you off the hook. Pass.

With 7 points, get in and compete. Bid 2♥ .

Bid 1NT. Don't worry about Spades; partner's double of 1♦ implies Spades.

Pass. Don't bid the same values twice; Partner has at most 8 points. With 17 points, this hand is worth a raise to 2 Spades.

Bid 1NT, showing a hand that was too strong to overcall 1NT initially.

Bid 2D, showing a hand that was too strong to overcall 2♦ initially.

Cue-bid 2♥, showing a good hand, but with no good bid available. Further bidding should allow the right contract to be reached.

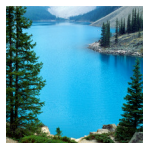
From the Editor:

In this issue, I am running some articles reprinted from past issues of the **I/N News ... especially for you!** dating as far back as 1998. The material is still current and the lessons are certainly valuable. Since our readership evolves as readers reach 300 points, these lessons are important to review.

Hope you enjoy the material as much as our past readers did.

Suzi

Minocqua-Lakeland Sectional
630 Chippewa Street, Minocqua
June 23-27



199er games:
Wednesday 7:00
Thursday, Friday 9:00, 1:30, 7:00
Saturday 10:00, 3:00
Info: Carolyn Pfeiffer 715-358-5901

BRUCE BROWN MEMORIAL VALENTINE SECTIONAL
February 12 - 14, 2010 Tommy Thompson Youth Center/Wisconsin
State Fair Park

640 South 84th Street, West Allis, WI (414) 266 -7000



Friday, February 12th

9:00 a.m. 299'er Stratified Pairs

1:00 p.m. 299'er Stratified Pairs

6:30 p.m. 299'er Stratified Pairs

Saturday, February 13th

9:00 a.m. 299'er Stratified Pairs

1:00 p.m. 299'er Stratified Pairs

6:30 p.m. 299'er Stratified Pairs

Chair: Rick Murray (414) 543-6604

Email: rmurray3@wi.rr.com

Partnership: John Stimson (414)

559-3463 Email:

stayman@wi.rr.com

Intermediate/New Comer Lynette

Koski Email: Llk220@aol.com

Racine/Kenosha Spring Fling Knights of
Columbus Hall, 13249 Washington, Sturtevant, WI
April 9-11, 2010

Friday, April 9

10AM 299'er Pairs

2PM 299'er Pairs

Saturday, April 10

10 AM 299'er Pairs

2PM 299'er Pairs

7PM 299'er Pairs

Sunday, April 11

**10 AM Stratified Future Master (0-300) Swiss
Teams**



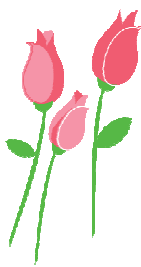
David Secondino, Chair 1-262-366-3665, 534-9087

Norm Heintz, Partnerships 1-262-633-3438

WUMBA Spring Sectional, March 19-21, 2010

Appleton, Wisconsin, The Wave Ballroom

2350 N. Casaloma Dr., Appleton, WI



Friday, March 19

1:30 p.m. Stratified 299er Pairs

7:00 p.m. Stratified 299er Pairs

Saturday, March 20

9:00 a.m. Stratified 299er Pairs

1:30 p.m. Stratified 299er Pairs

7:00 p.m. Stratified 299er Pairs

Chairperson

Mary Jane Fero

(920) 725-6454

maryjanefero@aol.com

Partnerships

Audrey Hansman

(920) 257-4260

ajhans@sbcglobal.net

District 13 Spring Regional

April 19-25, 2010

Grand Geneva Resort and Spa, Lake Geneva, WI
on Route 50, 1/2 mile East of Route 12

Room rate: \$107 single or double + \$12 resort fee.

Call 262-248-8811/800-558-3417 by April 1.

Tournament Chairman:

Marilynn Charlson, 262-646-2246
email: mcharlson@wi.rr.com

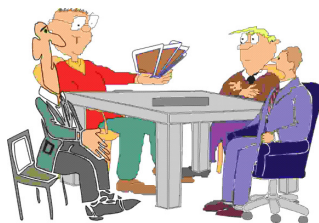
All 299er entries are only \$7.00!!!

Fresh Fruit

Fri/Sat Hospitality

Daily Bulletins

**Students play for half price
with valid student ID card!**



**Intermediate &
Newcomer Events
0-299er Masterpoints**

0-5 ACBL members play FREE all week

Monday: 7:30

Stratified 2 for 1

299er & 49er Pairs

Free entry for later in the week

Tuesday - Saturday

Single Session Games

at 9:30, 2:00, & 7:30

Stratified 299er & 49er Pairs

Sunday: 10:00 & 2:00

0-299er Swiss Teams:

300/200/100/50

2 separate sessions

Lynette Koskie, I/N Chairman

Llk220@aol.com

A 600 Year Old Story by Harriette Buckman

The next time you play bridge, take a good look at the cards. What you are looking at is a 600 year-old storybook, for the cards have changed little since they first appeared in Europe.

The suits represent the four estates or ranks of society as known in the Middle Ages, and the face cards are either legendary or Biblical heroes still dressed in medieval robes and holding their ancient symbols of authority.

THE SUITS

♠'s come from the Spanish word (spada) for sword and represent the military.

♥'s stand for courage and the highest development of humanity; this role was assigned to churchmen.

♦'s stand for the wealthy merchants who traded in gold and precious stones.

♣'s stand for the farmers and peasants. In typical muddling fashion, the British, from whom our cards are derived, took the club symbol - a trefoil or clover leaf - from French card-makers, but named it for the wooden cudgels shown on Italian and Spanish cards.

THE KINGS

These represent the four great monarchs of world history as known in the Middle Ages.

The king of spades is David of the Bible who killed Goliath and ruled over Israel.

The king of hearts is Charlemagne who reformed the Roman Empire in 800 A.D. after it had been overrun by barbarians. He is the only king whose robe is traditionally adorned with bands of ermine. Incidentally, he is the only one without a mustache - even Julius Caesar has one!

The king of diamonds is Julius Caesar. Whereas the other kings had swords, he is shown with a battle axe - the fasces, a bundle of rods with a protruding axe head, which was the symbol of official power in ancient Rome.

The king of clubs is Alexander the Great. He is the only king shown with an orb, the symbol of his world empire.

THE QUEENS

Curiously enough, they are not the wives of their respective kings.

The queen of spades is Athena, the Greek goddess of war and wisdom. She is the only one shown with a royal scepter. She also holds a flower as do the other queens.

The queen of hearts is the Biblical heroine Judith, who proved her courage (heart) by hacking off the head of an Assyrian general.

The queen of diamonds is Rachel, another Biblical heroine, for whom Jacob toiled for seven long years.

The queen of clubs is usually identified with "good Queen Bess", Elizabeth I of England.

THE KNAVES

Spades: Hogier, the Dane, a cousin of Charlemagne

Hearts: LaHire, a famous French warrior who fought with Joan of Arc

Diamonds: Sir Hector, half-brother of Sir Lancelot - Knight of the Round Table

Clubs: Sir Lancelot of the Lake - Knight of the Round Table

THE JOKER

He is the oldest relic of all, a holdover from the tarot deck which is the earliest known set of playing cards. That 78-card pack also contains such ominous faces as the Hanging Man, the Judgment, the Devil, and the Wheel of Fortune. This deck is still used by Gypsies for fortune telling.

TRUMPS

The word is simply a short form of "triumph". A trump card triumphs over the cards of all other suits.

May 21-23, 2010

Radisson Hotel & Conference Center, Iroquois Complex
2040 Airport Drive (off 41 & 172), Green Bay, WI

299er Regional

Friday, May 21, 2010

1:30 p.m. Stratified 49er Pairs
Stratified 299er Pairs
Compact Knockout, Sessions 1 & 2
7:00 p.m. Stratified 49er Pairs
Stratified 299er Pairs
Compact Knockout, Sessions 3 & Final

Saturday, May 22, 2010

9:00 a.m. FREE LESSON & BRIDGE+ GAME (0-20)
Stratified 299er Pairs
1:30 p.m. Stratified 49er Pairs
Stratified 299er Pairs
Compact Knockout, Sessions 1 & 2
7:00 p.m. Stratified 49er Pairs
Stratified 299er Pairs
Compact Knockout, Sessions 3 & 4

Sunday, May 23, 2010

9:00 a.m. & TBA Stratified 299er Swiss Teams
Stratified 299er Pairs
Single Sessions - Lunch Provided

Play with just other Newcomers & Intermediates!
New Player Service volunteers on hand!
Partners Guaranteed! 30 minutes before game time

FREE entry for ACBL members with 0 to 5 mps!
FREE Lesson & Bridge+ Game for <20 mps!
FREE Bridge Tips! Friday and Saturday at 6:15 p.m.

Prizes Every Session!
Trophies for Best Two Sessions & Best Overall!
All masterpoints are red!

Stratification (unless noted) -
49er games: C-0-5, B- 5-20, A- 20-49
299er games: C- 0-100, B-100-200, A-200-299
Events and Strats may be adjusted as necessary

Chair: Denise Hoffman
(906) 226-3108
d-hoffman@chartermi.net



Ms. Information ...

Dear Ms.,

We could use some general tips to improve our partnership.
Can you help use please?

Needy and Needy in Kenosha

Dear Needy and Needy,

Here are some ideas rerun from a twelve year old issue of this newsletter. Hope they help!!

While you and your partner should work together to hone your game and perfect your skills, it is best not to try to do this at the bridge table. It is best to work away from the table with a pad of paper and a number 2 pencil. If a problem occurs during a duplicate session, it is best to make a note of it and discuss it after the game. Working together, you can generally straighten out whatever bidding screw-ups have occurred so that next time your system will handle the situation.

Try to locate a mentor. A mentor is a player with greater experience with whom you have regular contact. Use the mentor not to teach you but to help you and partner work out the cause of problems in your bidding and play. Most experienced players are willing to act as a mentor when approached the right way. When you bring a hand to your mentor, be sure to have both the auction and hand written down accurately. Be sure you have all thirteen cards in each hand. Saying that you held "something in spades and a couple of hearts" just won't cut it. If you want proper advice, you have to supply proper information.

It is important for all advancing players to work on their games: alone and with their partners and mentors. Just how much time you spend doing this is up to you. The more you work at it, the better you will become.

It is also important to come up with the proper balance of "playing time" and "discussion time." Both are important to your game and both will improve your skills. The most important thing, however, is to remember not to mix the two activities. Enjoy your playing time and talk later for best results.

Ms.

IMP v. Matchpoint Strategy by Suzi Subeck

There is a definite difference in strategy when playing IMP scoring as in Swiss teams and Knockouts and Matchpoint scoring as in Duplicate.

IMPs

In IMPs your main goal is to get as many plus scores as possible.

You NEVER jeopardize your contract to try for overtricks. Overtricks mean very little in team games, and game swings, part score swings and slam swings mean a lot.

You ALWAYS try to beat the opponents' contract. If there is a chance to defeat a game, a slam, or even a part score by playing partner to hold a specific card or cards ... no matter how unlikely the holding ... you do just that in an effort to maximize the chances of generating a plus score.

You ALWAYS bid AGGRESSIVELY ... especially for vulnerable games. Vulnerable game swings are the most likely way to win matches at IMPs. I am not suggesting insane bidding and wishful thinking, but I am suggesting that you use logical thinking, and if it is close whether or not to bid one more time to get to a vulnerable game, just do it! If it goes down, the swing will be five or six IMPs in their favor (minus 100 plus their part score). If it makes the swing will be thirteen IMPs in your favor! The odds on this work for you.

Non-vulnerable game swings are either plus or minus five or six IMPS depending on whether they make or go down, so the odds are even. It is not as important to bid every non-vulnerable game.

The same is true of slams. The vulnerability carries a high premium and you really want to stretch to bid more in all vulnerable situations when possible.

MATCHPOINTS

In matchpoints, it is important to take all the possible tricks

As declarer, it is imperative to try for overtricks. Every trick you score more than any other pair, gains you a point in the overall scoring. Sometimes, you even risk your contract to try for those elusive extra tricks.

As defender, it is important to take all the tricks to which your side is entitled ... whether it beats the contract or not. Every trick you miss taking costs you overall points.

In matchpoints, it is often not necessary to bid close games. If you can play the hand one trick better than the field, you need not risk getting too high.

IN CONCLUSION

Most players find it much harder to play matchpoints than IMPs. Clearly, it is easier to simply worry about making the hand or beating the hand than making extra tricks. Sometimes, there are two or more possible ways to make an extra trick and you must decide which way affords you the highest percentage play. On the other hand, there is usually only one way to insure making or beating the hand, so are faced with less difficult decisions.

In matchpoints, it is often easier to defend by trying to construct the opponents' hands. In IMPs, it is often adequate to simply construct partner's hand.

OTHER IMPORTANT THINGS TO REMEMBER

In IMPs, both sides of your team MUST keep score. This is necessary so that you can compare with one another after the round.

You must NOT shuffle the boards before the halfway point. Whether you are playing in a round robin (a knockout match



(Continued on page 9)

(Continued from page 8)

involving more than two teams) or a head-up (a knockout match involving exactly two teams), you NEVER re-shuffle the boards until after you compare the scores. (Note: This happened in the first round of a club game years ago and the only solution was for the players to switch teammates! It was impossible for them to compare scores when they all played the same boards in the same direction!)

In duplicate, you may or may not keep score. If you do, always close your score card after you record the result since the opponents will be playing the same boards in a round or two.

Both team games and pairs' games are fun. Mixing them up keeps the game fresh and keeps you on your toes!

<p style="text-align: center;">Stars of Tomorrow 299ers Silver Point Sectional May 15 – 16, 2010 Darien Sportsplex 451 Plainfield Road, Darien, IL 60561 847-764-1060</p> <p style="text-align: center;">Saturday, May 15 10:00 Compact Knockout, Sessions 1 & 2 Stratified 299er Pairs (0-100, 100-200, 200-300) Stratified 49er Pairs (0-5, 5-20,20-50) 3:00 Compact Knockout, Sessions 3 & 4 Stratified 299er Pairs (0-100, 100-200, 200-300) 49er Pairs (0-5, 5-20, 20-50)</p> <p style="text-align: center;">Sunday, May 16 11:00 Stratified Swiss Teams (0-100, 100-200, 200-300) Playthrough</p> <p style="text-align: center;">Contact Angie Clark at 847-764-1060/ angieclark@comcast.net</p>	<p><small>0-5 masterpoint ACBL members PLAY FREE!</small></p> <p>Renowned Hospitality featuring Homemade Treats Upper Michigan Specialty Foods!</p>  <p>Goodie Bags for everyone!</p> <p>Door Prizes at all games!</p> <p>Trophies for 199er games!</p> <p><small>Bridge Tips by Guest Speakers</small></p>	<h2 style="text-align: center;">Marquette Sectional</h2> <p style="text-align: center;">Masonic Building, Historic Downtown Marquette, Upper Michigan August 26-29, 2010</p> <table style="width: 100%; border: none;"> <tr> <td style="width: 50%; vertical-align: top;"> <p>Thursday, August 26</p> <p>1:30 pm* Stratified 199er Pairs – Prizes! Stratified Pairs (Single Session) Compact KO (Rounds 1 & 2)</p> <p>7:30 pm* Stratified 199er Pairs – Prizes! Stratified Pairs (Single Session) Compact KO (Rounds 3 & 4)</p> <p>Friday, August 27</p> <p>9:00 am* Stratified 199er Pairs – Prizes! Stratified Pairs (Single Session) Bracketed Knockouts (1st round)</p> <p>1:30 pm* Stratified 199er Pairs – Prizes! Stratified Pairs (Single Session) Bracketed Knockouts (2nd round)</p> <p>7:30 pm* Stratified 199er Pairs – Prizes! Stratified Pairs (Single Session) Bracketed Knockouts (Final)</p> </td> <td style="width: 50%; vertical-align: top;"> <p>Saturday, August 28</p> <p>9:00 am* Stratified 199er Pairs – Prizes! Stratified Pairs (Single Session) Bracketed Knockouts (1st round)</p> <p>1:30 pm* Stratified 199er Pairs – Prizes! Stratified Pairs (Single Session) Bracketed Knockouts (2nd round)</p> <p>7:30 pm* Stratified 199er Pairs – Prizes! Stratified Pairs (Single Session) Bracketed Knockouts (Final)</p> <p>Sunday, August 29</p> <p>9:00 am* & TBA Stratified 199er Swiss Teams Stratified Team Averaged Swiss Teams</p> <p style="text-align: center;">Single Sessions Includes: Breakfast AND Lunch</p> <p style="text-align: center;"><i>* All times are Eastern Daylight Time</i></p> <p style="text-align: center;"><small>Stratified Open games A – 2000+, B – 750-2000, C – 0-750 Stratified 199er games A - 100-200, B - 50-100, C - 0-50</small></p> <p style="text-align: center;"><small>Tournament Chair: Denise Hoffman 906-226-3108 or d-hoffman@chartermi.net Partnerships: Cerona Stevens 906-249-3529 or ckays@sbccglobal.net For additional info see our website: http://userpages.chorus.net/stubman or at ACBL.org</small></p> </td> </tr> </table>	<p>Thursday, August 26</p> <p>1:30 pm* Stratified 199er Pairs – Prizes! Stratified Pairs (Single Session) Compact KO (Rounds 1 & 2)</p> <p>7:30 pm* Stratified 199er Pairs – Prizes! Stratified Pairs (Single Session) Compact KO (Rounds 3 & 4)</p> <p>Friday, August 27</p> <p>9:00 am* Stratified 199er Pairs – Prizes! Stratified Pairs (Single Session) Bracketed Knockouts (1st round)</p> <p>1:30 pm* Stratified 199er Pairs – Prizes! Stratified Pairs (Single Session) Bracketed Knockouts (2nd round)</p> <p>7:30 pm* Stratified 199er Pairs – Prizes! Stratified Pairs (Single Session) Bracketed Knockouts (Final)</p>	<p>Saturday, August 28</p> <p>9:00 am* Stratified 199er Pairs – Prizes! Stratified Pairs (Single Session) Bracketed Knockouts (1st round)</p> <p>1:30 pm* Stratified 199er Pairs – Prizes! Stratified Pairs (Single Session) Bracketed Knockouts (2nd round)</p> <p>7:30 pm* Stratified 199er Pairs – Prizes! Stratified Pairs (Single Session) Bracketed Knockouts (Final)</p> <p>Sunday, August 29</p> <p>9:00 am* & TBA Stratified 199er Swiss Teams Stratified Team Averaged Swiss Teams</p> <p style="text-align: center;">Single Sessions Includes: Breakfast AND Lunch</p> <p style="text-align: center;"><i>* All times are Eastern Daylight Time</i></p> <p style="text-align: center;"><small>Stratified Open games A – 2000+, B – 750-2000, C – 0-750 Stratified 199er games A - 100-200, B - 50-100, C - 0-50</small></p> <p style="text-align: center;"><small>Tournament Chair: Denise Hoffman 906-226-3108 or d-hoffman@chartermi.net Partnerships: Cerona Stevens 906-249-3529 or ckays@sbccglobal.net For additional info see our website: http://userpages.chorus.net/stubman or at ACBL.org</small></p>	<p><small>Air Conditioned FREE PARKING</small></p> <p>Easy walk to restaurants and the famous Seafood Festival in the Harbor all weekend!</p>  <p>Close to shopping museums Cineplex casinos golf courses parks water sports!</p> <p><small>Directions and Housing info on back</small></p>
<p>Thursday, August 26</p> <p>1:30 pm* Stratified 199er Pairs – Prizes! Stratified Pairs (Single Session) Compact KO (Rounds 1 & 2)</p> <p>7:30 pm* Stratified 199er Pairs – Prizes! Stratified Pairs (Single Session) Compact KO (Rounds 3 & 4)</p> <p>Friday, August 27</p> <p>9:00 am* Stratified 199er Pairs – Prizes! Stratified Pairs (Single Session) Bracketed Knockouts (1st round)</p> <p>1:30 pm* Stratified 199er Pairs – Prizes! Stratified Pairs (Single Session) Bracketed Knockouts (2nd round)</p> <p>7:30 pm* Stratified 199er Pairs – Prizes! Stratified Pairs (Single Session) Bracketed Knockouts (Final)</p>	<p>Saturday, August 28</p> <p>9:00 am* Stratified 199er Pairs – Prizes! Stratified Pairs (Single Session) Bracketed Knockouts (1st round)</p> <p>1:30 pm* Stratified 199er Pairs – Prizes! Stratified Pairs (Single Session) Bracketed Knockouts (2nd round)</p> <p>7:30 pm* Stratified 199er Pairs – Prizes! Stratified Pairs (Single Session) Bracketed Knockouts (Final)</p> <p>Sunday, August 29</p> <p>9:00 am* & TBA Stratified 199er Swiss Teams Stratified Team Averaged Swiss Teams</p> <p style="text-align: center;">Single Sessions Includes: Breakfast AND Lunch</p> <p style="text-align: center;"><i>* All times are Eastern Daylight Time</i></p> <p style="text-align: center;"><small>Stratified Open games A – 2000+, B – 750-2000, C – 0-750 Stratified 199er games A - 100-200, B - 50-100, C - 0-50</small></p> <p style="text-align: center;"><small>Tournament Chair: Denise Hoffman 906-226-3108 or d-hoffman@chartermi.net Partnerships: Cerona Stevens 906-249-3529 or ckays@sbccglobal.net For additional info see our website: http://userpages.chorus.net/stubman or at ACBL.org</small></p>				

Tournament Results: FallFest Sectional, Lombard, 11-06-08

Friday Morning 299er Pair – 13.0 Tables

MPs	A	B	C	Names
2.71	1			Dottie Bendis, Plainfield IL; Karen Stavenger, Naperville IL
2.03	2	1	1	Bonnie Katzenstein – Roxanne Stevenson, Naperville IL
1.52	3			Thomas McDonald – Karen Anderson, Batavia IL
1.43	4	2		Sheila Stillman, Highland Park IL; Loretta Wexler, Skokie IL
0.86	5			Robert Quintin, Saint Charles IL; Michael Morrice, Crystal Lake IL
1.09	6	3	2	Larry Lapalio, Hinsdale IL; Robert Bednar, Palos Hills IL
0.82	4	3		Claudia Dunn – Grace Tampa, Wheaton IL
0.61	5	4		Judith Polo, Westmont IL; Virginia Cahill, Aurora IL
0.46	6	5		Larry Taylor, Palatine IL; Joy Dillon, Inverness IL

Friday Aft 299er Pairs – 11.0 Tables

MPs	A	B	C	Names
2.12	1			Lawrence Wolfson, Schaumburg IL; Linda McKinney, Oswego IL
1.59	2			Ronald Greek – Judith Greek, Galesburg IL
1.19	3			Marilyn Thomas – Jack Thomas, Western Springs IL
1.71	4	1	1	Kathryn Lefty – Marilyn Lewis, Glen Ellyn IL
0.67	5			Mary Warren, Wheaton IL; Carolyn Satrum, Downers Grove IL
1.28	6	2		Michael Kramer – Vicki Kramer, Addison IL
0.84		3/4		Dolores Lewis, Indian Head Prk IL; Rosemarie Mochel
0.96		3/4	2	Patsy Engelhard – Robin Roy, Chicago IL
0.54		5		Linda Odell – William Odell, Sturgis MI
0.72			3	Stephen Blitz, Fitchburg WI; Amelia Butzen, Fond Du Lac WI
0.54			4	Larry Lapalio, Hinsdale IL; Robert Bednar, Palos Hills IL

Friday Eve 299er Pairs – 5.5 Tables

MPs	A	B	C	Names
1.61	1	1	1	Brian Gallagher – Christel Gallagher, Glen Ellyn IL
1.21	2			Barbara Tadin – D Jean Donahue, Westchester IL
1.00	3	2	2	Larry Taylor, Palatine IL; Joy Dillon, Inverness IL
0.75	4	3		Judy D'Isa, La Grange Park IL; Betsy Hoyd, Brookfield IL

Saturday Aft 299er Pairs – 11.5 Tables

MPs	A	B	C	Names
2.22	1			Ronald Greek – Judith Greek, Galesburg IL
1.81	2	1	1	James Jacklin, Lagrange Park IL; Don Cohen, Oak Park IL
1.25	3			John Ulreich – Lynn Ulreich, Frankfort IL
1.36	4	2		James Degerstrom – Ann Degerstrom, Oak Brook IL
0.70	5			Stephen Bell, Warrenville IL; Robert Kucaba, Downers Grove IL

(continued on page 12)

Marty Bergen Offers Lessons On-Line ... Improve Your Game!!

Longtime bridge teacher and author, Marty Bergen, is giving monthly lessons on the internet. The format is informative, easy-to-understand and entertaining (as in his books). The lessons are totally appropriate for both intermediate and advanced players. Classes are scheduled monthly. Once you attend 5 classes, you can attend your sixth class for free.

Marty has scheduled the following online classes:

What You Must Know about Balancing

Thursday evening February 11 8:30 PM Eastern

Saturday afternoon February 13 2:00 PM Eastern

How to Create Trump Tricks on Defense

Thursday evening March 11 8:30 PM Eastern

Saturday afternoon March 13 2:00 PM Eastern

Each lesson lasts about 100 minutes.

Because everyone's schedule is different, Marty presents the same lesson twice. Signing up entitles you to attend either or both sessions.

In addition to the lesson, all participants receive:

- Hand records of all lesson hands prior to the lesson
- A transcript of the lesson itself
- A written record of all questions and Marty's detailed answers and a list of "Bergenisms"

Those who sign up are also eligible for discounts on Marty's books and booklets. Marty gives his classes on the popular online bridge site, Bridge Base Online (BBO). If you don't yet play on BBO, it is a free site where thousands of bridge players gather every day from all over the world. Access to BBO is available at no cost to you.

Opening Leads Lesson

Every deal involves an opening lead, and on many hands, it is decisive. Although no one can always make the best lead, there is a lot more to this topic than many players are aware of. In addition to discussing what to lead, Marty's lesson will focus on exactly what the opening leader should think about before choosing his lead.

Here are some of the topics Marty will cover:

- Which suit should I lead? - The right (and wrong) times to lead: trump, partner's suit and short suits. - Once you select the suit, how to select the right card. - Good (and bad) opening lead conventions. - Which card should you lead in partner's suit? - The correct card to lead from xxx. - When is it correct to lead an unsupported ace? - Imps vs. Matchpoints.

Here is a sample opening lead problem that illustrates what Marty will typically discuss:

West	North	East	South
—	—	1♥	1♠
Dbl	2♠	Pass	4♠
All pass			

As West, you hold: ♠ 6 2 ♥ 5 4 ♦ Q J 10 8 5 ♣ A J 9 8

After your textbook Negative Double, your opponents arrive in game. What is your opening lead? Answer below.

Competitive Bidding Lesson

These days, even novices are competing more than ever. It is absolutely essential to know what to do on competitive auctions. To bid or not to bid, that is the question.

Here are some of the topics Marty will cover:

- The Law of Total Tricks; - Balancing - A very misunderstood topic; What you must know about competitive doubles; - The correct way to compete after RHO opens a minor; 4♠ over 4♥; - Having fun after RHO redoubles; The magic of voids; - OBARBIDS: Easy and Logical.

(Continued on page 11)

(Continued from page 10)

Here is a sample competitive bidding problem that illustrates what Marty will discuss:
Both sides are vulnerable ... Does not matter whether IMPs or Match Points.

1♠ Dbl Rdbl ???

You hold: ♠ 9 5 3 ♥ — ♦ Q 7 6 4 2 ♣ Q 8 6 5 3

What would you do? The answer can be found below

Declaring Suit Contracts

Everyone loves to find a good fit and play in a major with lot of trumps, good distribution, and a long, strong side suit. Unfortunately, that doesn't happen often enough. On many hands, declarer has only mediocre trumps, no great side suit and sometimes has to cope with a bad trump split. Nevertheless, he needs to find a way to make his contract.

Here are some of the topics Marty will cover:

- How to figure out a good plan to dump your losers
- When not to count losers
- How to decide whether to draw trumps
- What is the most important tip that every declarer must know
- How to find clues from the opponent's auction
- How to count the defender's hands
- How to cope with a bad split
- The truth about 4-4 fits vs. 5-3 fits

Answer to Opening Lead Problem

West	North	East	South
—	—	1♥	1♠
Dbl	2♠	Pass	4♠
All pass			

As West, you hold: ♠ 6 2 ♥ 5 4 ♦ Q J 10 8 5 ♣ A J 9 8

Both diamonds and hearts can wait. Your side has strength in all three side suits. If South has losers in a red suit, neither he nor dummy can have a strong suit that can be used to discard those losers. Although you can't see the N-S cards, consider what is going on. The opponents can't have more than half the deck, so how did they justify bidding game? There can be only one answer. Distribution.

Your mission is clear. Lead trumps early and often.

Here is the entire deal:

	North	
Contract: 4♠	♠ K Q 7	
Lead: ♠2	♥ J 7 6	
	♦ 9 7 6 4 3	
	♣ 6 3	
West (You)		East
♠ 6 2		♠ 8 4
♥ 5 4		♥ K Q 10 8 2
♦ Q J 10 8 5		♦ A K 2
♣ A J 9 8		♣ 10 4 2
	South	
	♠ A J 10 9 5 3	
	♥ A 9 3	
	♦ —	
	♣ K Q 7 5	



Chicago's Exciting SummerFest Regional
July 12-18, 2010
DuPage Expo Center, 4050 Main, St. Charles, IL

Intermediate/Novice Schedule of Events

♦ All masterpoints are red points.

Lunch & Learn Program ♦ Guest Speakers

♦ Details in Daily Bulletin.

Monday 7:30 I/N Stratified Charity Pairs
Tuesday through Saturday 2:00 & 7:30 Single Sessions
Sunday 10:00 am & 2:00, 299er Stratified Swiss Teams

Newcomer Chair: Angie Clark, 847-272-1060
angieclark@comcast.net

South will win the trump lead in dummy, and lead a club to his king. You win the ♣A, and lead a second round of trumps. Declarer's goose is now cooked. Because dummy has only one remaining trump, South can't ruff both of his club losers on the board. In addition to his two inevitable heart losers and the ♣A, he will eventually lose a second club trick and be down one. On any other lead, declarer would have no problems. He would win the lead in his hand, and lead the ♣K. At that point, South can't be prevented from ruffing both of his small clubs on the board.

When your side has strength in all the side suits, lead trump.

(Continued on page 12)

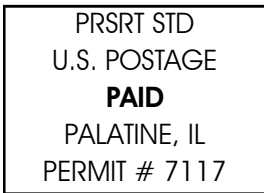
The District 13 I/N Newsletter, Winter, 2009

Suzi Subeck, Editor

Email: stansubeck@prodigy.net

106 Penn Court, Glenview, IL 60026

Voice: 847-509-0311; Fax: 312-220-9114



Upcoming Tournaments

- Bruce Brown Sectional, 2/12-14, West Allis, WI
- WUMBA Spring Sectional, 3/19-21, Appleton, WI
- Racine Sectional, 4/9-11, Sturtevant, WI
- District 13 Spring Regional, 4/19-25, Lake Geneva, WI
- Stars of Tomorrow Sectional, 5/15-16, Darien, IL
- 299er Regional, 5/21-23, Green Bay, WI
- Minocqua Sectional, 6/23-27, Minocqua, WI
- Marquette Sectional, 8/26-29, Marquette, MI

(Continued from page 11)

Answer to Competitive Bidding Problem

Both sides are vulnerable

1♠ Dbl Rdbl ???

You hold: ♠ 9 5 3 ♥ __ ♦ Q 7 6 4 2 ♣ Q 8 6 5 3

Bid 2NT! I refer to this as the Unusual Unusual-Notrump. After three players have shown strength, 4th hand can't have enough to try for 3NT. Once partner forced you to respond at the two level, he can't be in jeopardy at the three level when you have this distribution.

The opponents have a fit in both majors, and you would like to make it tough for them to find their fits and judge their proper level. In addition, if partner has a singleton spade and a very nice fit for one of your minors, bidding 2NT might enable you to find a good sacrifice.

And if he has a really good fit such as ♠2 ♥Q 8 6 5 ♦A K 8 3 ♣K J 9 4, it wouldn't surprise me if we made 5 of a minor. The link to sign up for the lessons is www.hondobridge.com/mbonlineclasses.php?f=me

Marty Bergen, well known and highly respected bridge author is on this year's ACBL Hall of Fame Ballot.

1.02 6 3 James Mueller - Barbara Mueller, Darien IL	1.61 1 1 Carolyn Pfeiffer, Minocqua WI; Lee Schultz, Arbor Vitae WI
0.76 4 Sheila Stillman, Highland Park IL; Loretta Wexler, Skokie IL	1.21 2 2 Shirley Adams, Appleton WI; Cyann Martin, Neenah WI
1.02 5 2 Larry Lapalio, Hinsdale IL; Robert Bednar, Palos Hills IL	0.91 3 3 Stephen Blitz, Fitchburg WI; Amelia Butzen, Fond Du Lac WI
0.77 3 Kathryn Lefty - Marilyn Lewis, Glen Ellyn IL	0.68 4 Alexander Zaporozec - Tony Blasczyk, Madison WI
0.57 4 Judith Polo, Westmont IL; Virginia Cahill, Aurora IL	0.60 4 Sheryl Burkel - Martin Burkel, Bayfield WI
Saturday Eve 299er Pairs - 5.5 Tables	Milwaukee Sectional, Milwaukee, WI, 12/26-29
MPs A B C Names	Monday Morning 299ers - 4.0 Tables
1.61 1 1 1 Larry Lapalio, Hinsdale IL; Robert Bednar, Palos Hills IL	MPs A B C Names
1.21 2 2 Michael Kramer - Vicki Kramer, Addison IL	1.41 1 1 Marlene Nievin - Paula Meisner, Racine WI
0.91 3 3 2 Sharon Trube, Lisle IL; Mary Boyum, Naperville IL	1.06 2 Jane Shlimovitz, Mequon WI; Roslyn Krause, Milwaukee WI
0.68 4 3 Stephen Blitz, Fitchburg WI; Amelia Butzen, Fond Du Lac WI	0.79 3 Rose Zicarelli - Dianne Rice, Racine WI
LaCrosse Sectional, LaCrosse, WI, 11/13-15	0.93 2 Sharon Oldenburger - Marvin Oldenburger, Antioch IL
Fri Aft 199er Pairs - 5.0 Tables	Monday Aft 299er Pairs - 6.0 Tables
MPs A B Names	MPs A B C Names
1.43 1 1 Sandra Gisslen - Avis Swan, Lake City MN	1.61 1 Robert Rice - Rose Zicarelli, Racine WI
0.94 2/3 2/3 Richard Riesen - Liz Riesen, Madison WI	1.06 2/3 Kathleen Wigdale, Mequon WI; Roslyn Krause, Milwaukee WI
0.94 2/3 2/3 R Craig Shulstad - Mariana Shulstad, Minneapolis MN	1.33 2/3 1 Marvin Oldenburger - Sharon Oldenburger, Antioch IL
0.60 4 Larry Whitson - Rosemary Whitson, Burnsville MN	0.97 4/6 2/3 1/2 Adrian Richfield, Waukesha WI; William Parsons, Pewaukee WI
Sat Mor 199er Imp Pairs - 4.5 Tables	0.97 4/6 2/3 1/2 Maggie Topitzes, Milwaukee WI; Marlene Frey, Brookfield WI
MPs A B C Names	0.52 4/6 Ron Ramaker, Brown Deer WI; Mike Grimmer, Milwaukee WI
1.43 1 1 1 Richard Riesen - Liz Riesen, Madison WI	
1.07 2 2 Amelia Butzen, Fond Du Lac WI; Mary Ann Romberg, New London WI	
0.80 3 3 2 Deborah Ridenour - Jane O'Meara, Eau Claire WI	
0.60 4 Mary Peterson, La Crescent MN; Jeri Sebo, La Crosse WI	
Fitchburg Sectional, Fitchburg, WI, 12/4-6	
Sat Mor 299er Pairs - 3.0 Tables	
MPs A B Names	
1.31 1 Sheryl Burkel - Martin Burkel, Bayfield WI	
0.98 2 Wes Burzynski - Judy Burzynski, Waukesha WI	
Sat Aft 299er Pairs - 6.0 Tables	
MPs A B C Names	